

new



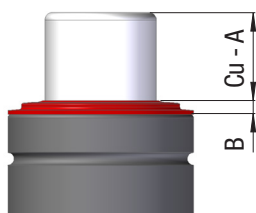
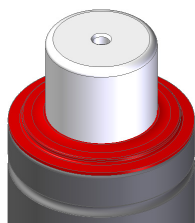
Secondary Wiper

To improve performances of nitrogen cylinders used in heavy contaminated environments, Special Springs, in addition to the famous SKUDO installed as standard on series KE, RS and MS, offers a complete range of secondary wipers.

These new secondary wipers, polyurethane made, are designed for a perfect fitting with many series of nitrogen cylinders. See tab below for technical data. All secondary wipers can be ordered separately from the cylinders and assembled by user or, if requested with cylinder order, will be assembled at the factory by Special Springs.

BENEFITS

- Excellent protection from contaminants liquid and solid
- High performance polyurethane for best resistance to chemicals
- Prolonged lasting of guiding and dynamic seal
- Minimal loss of nominal stroke
- No limit of positioning of the cylinder
- Easy assembly
- Saving of money

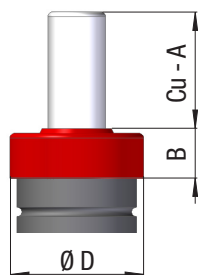


A = Nominal stroke reduction
 Cu = Nominal Stroke

Cylinder Code	A mm	B mm	Secondary Wiper Code
M 300	2	4	59SW001
RV / RT 350	2	4	59SW002
RV / RT 500	2	4	59SW003
RV / RF / RG / RT 750	2	4	59SW004
RV / RF / RG / RT 1000	2	5	59SW005
RV / RF / RT 1200	2	5	59SW005
RV / RF / RG / RT 1500	2,5	5,5	59SW006
RV / RF / RG / RT 2400	2,5	5,5	59SW007
RV / RG / RT 4200	2,5	5,5	59SW008
RV / RG / RT 6600	2,5	5,5	59SW009
RV / RT 9500	3	6	59SW010
RV 12000	3	6	59SW011
RV 20000	3	6	59SW012
H 300	2	4	59SW002
H / HF 500	2	4	59SW003
HT 500	2	4	59SW047
H 700	2	4	59SW004
HT 700	2	4	59SW048

Cylinder Code	A mm	B mm	Secondary Wiper Code
H 1000	2	5	59SW005
HT 1000	2	5	59SW049
H 1500	2,5	5,5	59SW006
H 2400	2,5	5,5	59SW007
H 4200	2,5	5,5	59SW008
H 6600	2,5	5,5	59SW009
H 9500	3	6	59SW010
H 18500	3	6	59SW013
SC 150	2	4	59SW014
SC / SCF 250	2	4	59SW015
SC 500	2	4	59SW016
S / SC 750	2	5	59SW017
SC 1500	2,5	5,5	59SW018
SC 3000	2,5	5,5	59SW019
SC 5000	3	6	59SW020
SC 7500	3	6	59SW021
SC 10000	3	6	59SW022

⚠ The installation of the secondary wiper will require the removal of the active safety marker OSM where mounted.



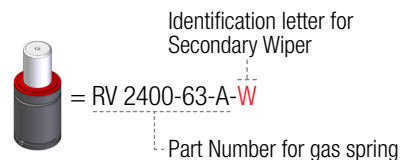
Cylinder Code	A mm	B mm	Ø D mm	Secondary Wiper Code
M 50	-	9,5	15	59SW023
M 70	-	9,5	18	59SW024
M 90 rev. A	0,5	10,5	22	59SW025
M 200 rev. A	0,5	10,5	28	59SW026

Cylinder Code	A mm	B mm	Ø D mm	Secondary Wiper Code
M 90 rev. B	0,5	10,5	22	59SW045
M 200 rev. B	0,5	10,5	28	59SW046
RV 170	1,5	9,5	22	59SW027
RV 320	1,5	9,5	28	59SW028
ML 300	1,5	11,5	29	59SW030
ML 500	1,5	11,5	36	59SW031
ML 1000	1,5	11,5	42	59SW032
ML 1800	0,5	11,5	54	59SW033
ML 3000	0,5	11,5	67	59SW034
ML 4700	0,5	11,5	79	59SW035
ML 7500	0,5	11,5	100	59SW036
ML 12000	0,5	11,5	125	59SW037
MP 500	1,5	33	36	59SW043
MP 1000	1,5	19	42	59SW044



HOW TO ORDER

E.g. How to order a gas spring with Secondary Wiper **already** installed



E.g. How to order **only** the Secondary Wiper

