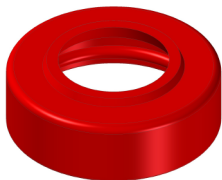




SW - SECONDARY WIPER

Installation guide



Model A

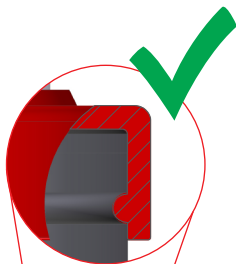
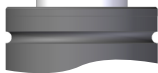


Model B

Model A



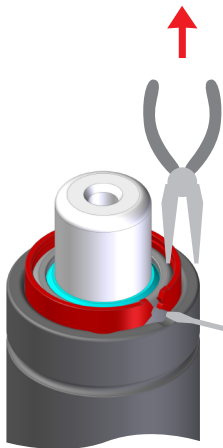
ONLY for RV 170, RV 320,
M (not M 300), **ML**, **MP** series



Model B

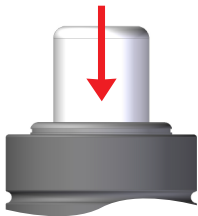
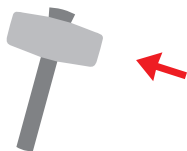


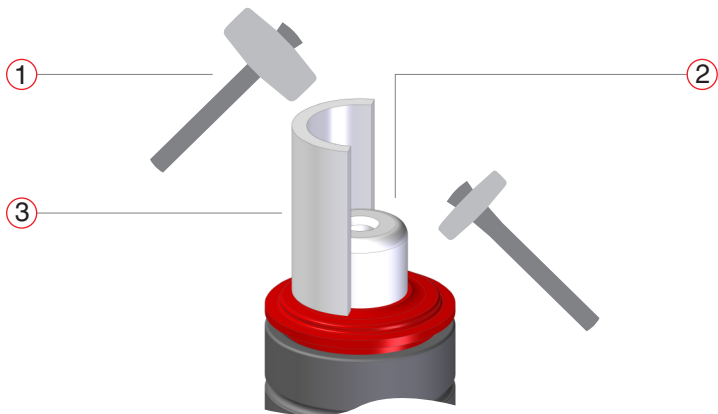
FOR M 300, RV/RS (not 170/320), RT, RG, RF, SC, H series



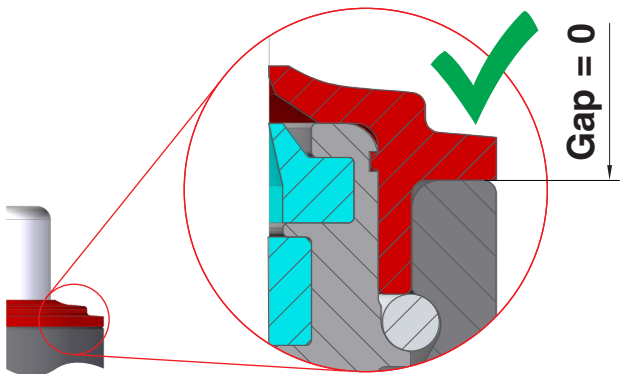
A) Remove the OSM
Over Stroke Marker ring

B) See guide 9801C37502017
at www.specialsprings.com





- ① ONLY rubber hummer of suitable size
- ② Avoid scratching the rod
- ③ Anti scratch nylon spacer



Headquarter**Special Springs S.r.l.**

Via Nardi, 124/A

36060 Romano d'Ezzelino (VI) - ITALY

tel. +39 0424 539181

email info@specialsprings.com

www.specialsprings.com

North America Subsidiary**Special Springs LLC**

7707 Ronda Drive, Canton

Michigan 48187 - USA

Ph. +1 734.892.2324

email info@specialspringsna.com

www.specialspringsna.com

South America Subsidiary**Special Springs do Brasil**

Avenida dom Pedro I, 2156 - Vila Pires

09130-012 Santo André / SP - BRASIL

Ph. +55 11 2324 3545

email comercial@specialsprings.com.br

www.specialsprings.com.br

India Subsidiary**Global Special Springs pvt. Ltd.**

Survay no. 69/2 - Chandarda, Tal. Kadi

Dist. Mehesana (Ahmedabad - Mehesana Highway)

Gujarat, 382705 - INDIA

Ph. +91 2764 273065

email info@globalspecialsprings.com

www.specialsprings.com

9801137402019