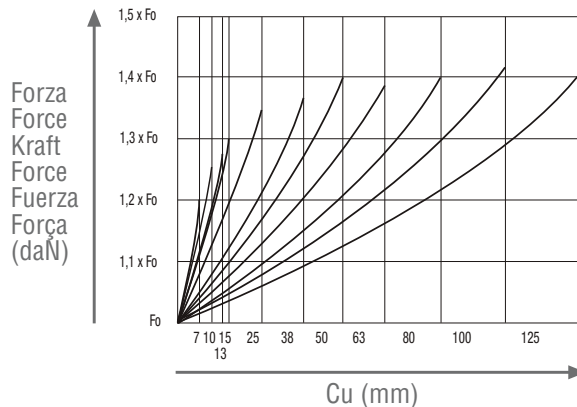
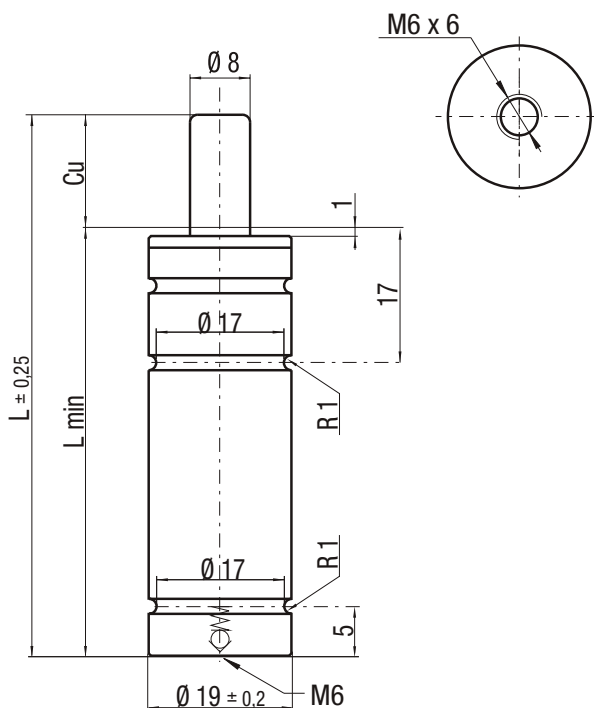


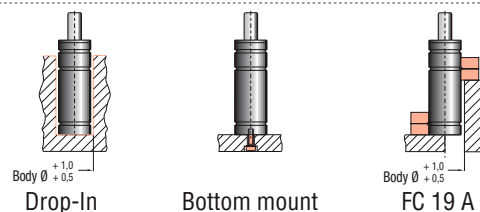
M 90



Esempio d'ordine
Ordering example
Bestellbeispiel
Exemple de commande
Ejemplo de pedido
Ejemplo de pedido

(10) M90-050-A-YW

Fissaggi
Fixings
Befestigungen
Fixé
Bridas
Fixação



P _{max} bar/psi 180/2610	P _{min} bar/psi 10/145	S 0,5 cm ²	0-80°C 32-176°F	N ₂	Max. Speed 1,8 m/s	PEI 97/28/EC ISO 11901 VDI 3003	2/3D CAD Files
--------------------------------------	------------------------------------	--------------------------	--------------------	----------------	-----------------------	--	----------------------

Technical specifications

Dati tecnici - Technische Daten - Fiche technique - Datos técnicos - Dados técnicos

Codice Code Bestell-nummer Référence Codice	Cu mm	L mm	Lmin mm		 Kg	Forza Force Kraft Force Forza Forza	P bar	F ₀ ±5% daN
M90 - 007 - A - ...	7	56	49	M90 - 007 - A - ... - N	0,07	OR	10	5
M90 - 010 - A - ...	10	62	52	M90 - 010 - A - ... - N	0,07	PR	20	10
M90 - 013 - A - ...	13	67,4	54,7	M90 - 013 - A - ... - N	0,08	GR	60	30
M90 - 015 - A - ...	15	72	57	M90 - 015 - A - ... - N	0,08	BU	100	50
M90 - 025 - A - ...	25	92	67	M90 - 025 - A - ... - N	0,09	RD	140	70
M90 - 038 - A - ...	38	118	80	M90 - 038 - A - ... - N	0,11	YW	180	90
M90 - 050 - A - ...	50	142	92	M90 - 050 - A - ... - N	0,12	BK	10+180	5+90
M90 - 063 - A - ...	63	172	109	M90 - 063 - A - ... - N	0,14			
M90 - 080 - A - ...	80	205	125	M90 - 080 - A - ... - N	0,15			
M90 - 100 - A - ...	100	245	145	M90 - 100 - A - ... - N	0,17			
M90 - 125 - A - ...	125	295	170	M90 - 125 - A - ... - N	0,20			

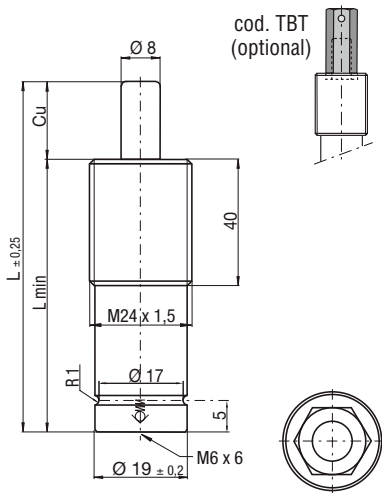
S = rod section area
P = nominal charging pressure
F₀ = nominal initial force

pg. 145

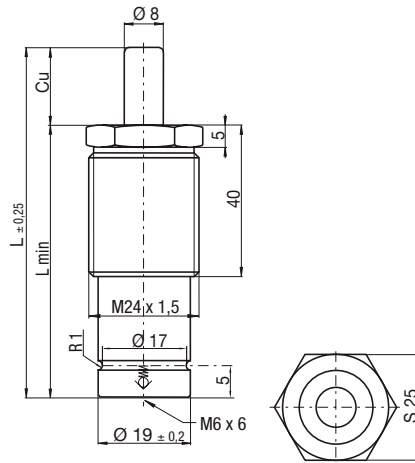
M 90 threaded

Filettati - Threaded - Gewindekörper - Fileté - Roscado - Roscado

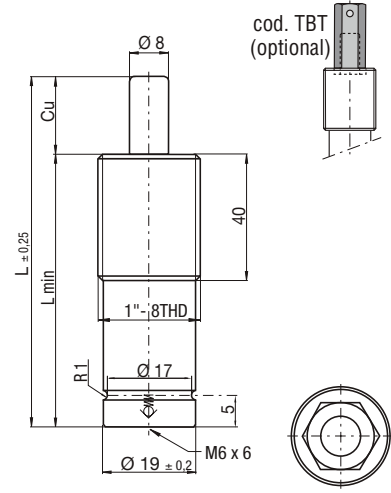
TBM



TEM



TBI



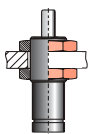
Esempio d'ordine
Ordering example
Bestellbeispiel
Exemple de commande
Ejemplo de pedido
Ejemplo de pedido

(10) M90-050-A-YW-TBM

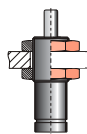
(10) M90-050-A-YW-TEM

(10) M90-050-A-YW-TBI

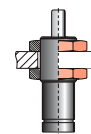
Fissaggi
Fixing
Befestigungen
Fixé
Fissaggi
Fissaggi



DM 24



DM 24



DI 1-8



I I cilindri filettati NON hanno riserva corsa. Si raccomanda di NON superare il 90% della corsa nominale Cu.

GB Threaded cylinders have NO stroke extension. It is recommended NOT to exceed 90% of the nominal stroke Cu.

D Die Gewindezylinder haben KEINEN Reservelauf. Es wird empfohlen, 90% des Nennlaufs für Cu nicht zu überschreiten.

F Les cylindres filetés N'ONT PAS de réserve de course. Il est recommandé de NE PAS dépasser 90% de la course nominale Cu.

E Los cilindros roscados NO tienen reserva de carrera. Es importante NO superar el 90% de la carrera nominal Cu.

P Os cilindros rosqueados NÃO possuem reserva de curso. Aconselha-se NÃO ultrapassar os 90% do curso nominal Cu.