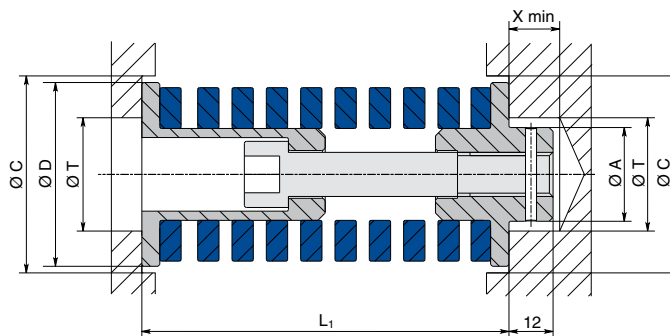


Precompressed Unit

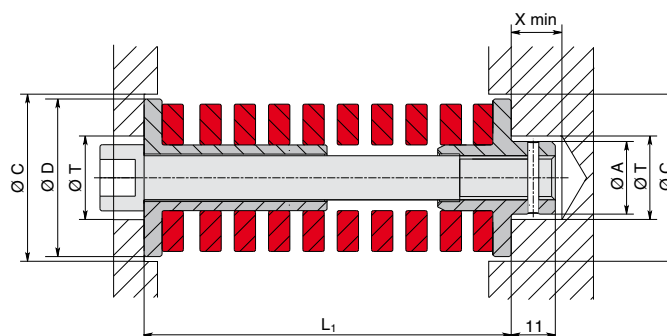
Peugeot - Citroën Standard

- IT** Sistema precompresso, carico medio, spina singola corta
- EN** Precompressed unit, medium load, short single pin
- DE** Vorspannungssystem, mittlere Spannung, kurzer Einfachstecker
- FR** Ensemble precomprime, charge moyenne, un teton court
- ES** Sistema pretensado, carga mediana, clavija individual corta
- PT** Sistema pré-comprimido, carga média, tomada simples curta



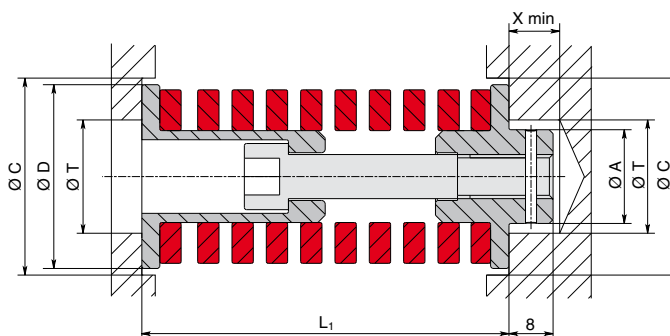
Code Special Springs	Code PSA Mabec	L1	ØA	ØB	ØD	Initial Force	25% Lo	32% Lo	ØC	ØT	X min	Spring data					
												D _H	L ₀	R			
15 01 B40122	X 346 590 060	122	20.5	-	40	15	940	17	2006	25	2508	42	22.5	13	40	127	62.7
15 01 B50122	X 346 590 055	122	25.5	-	50	15	1455	17	3104	25	3880	52	27.5	13	50	127	97
15 01 B63122	X 346 590 050	122	36.5	-	63	15	2520	17	5376	25	6720	65	38.5	13	63	127	168

- IT** Sistema precompresso, carico forte Ø25
- EN** Precompressed unit, strong load Ø25
- DE** Vorspannungssystem, starke Spannung Ø25
- FR** Ensemble precomprime, charge forte Ø25
- ES** Sistema pretensado, carga fuerte Ø25
- PT** Sistema pré-comprimido, carga pesada Ø25



Code Special Springs	Code PSA Mabec	L1	ØA	ØB	ØD	Initial Force	20% Lo	28% Lo	ØC	ØT	X min	Spring data					
												D _H	L ₀	R			
15 00 R25069	X 346 590 045	69	13	-	25	2	246	11	1599	16	2214	27	14	14	25	64	123

- IT** Sistema precompresso, carico forte Ø32
- EN** Precompressed unit, strong load Ø32
- DE** Vorspannungssystem, starke Spannung Ø32
- FR** Ensemble precomprime, charge forte Ø32
- ES** Sistema pretensado, carga fuerte Ø32
- PT** Sistema pré-comprimido, carga pesada Ø32



Code Special Springs	Code PSA Mabec	L1	ØA	ØB	ØD	Initial Force	20% Lo	28% Lo	ØC	ØT	X min	Spring data					
												D _H	L ₀	R			
15 00 R32088	X 346 590 044	88	13	-	33	21	2562	-	8	3528	34	14	8	32	102	122	
15 00 R32108	X 346 590 043	108	13	-	33	14	1498	9	2461	18	3424	34	14	8	32	115	107

1 N = 0.1 daN = 0.102 kgf



15 00 R25069