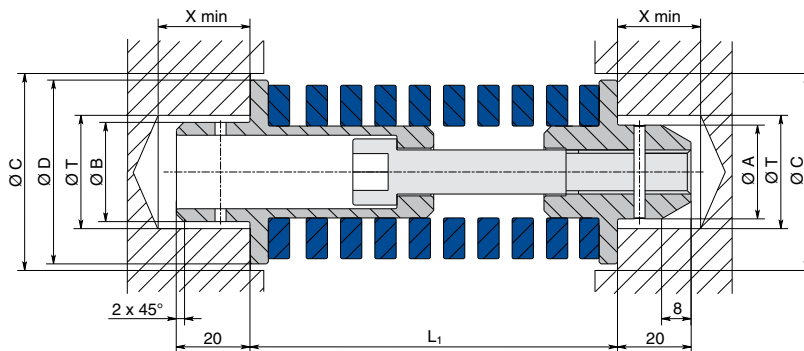


Precompressed Unit

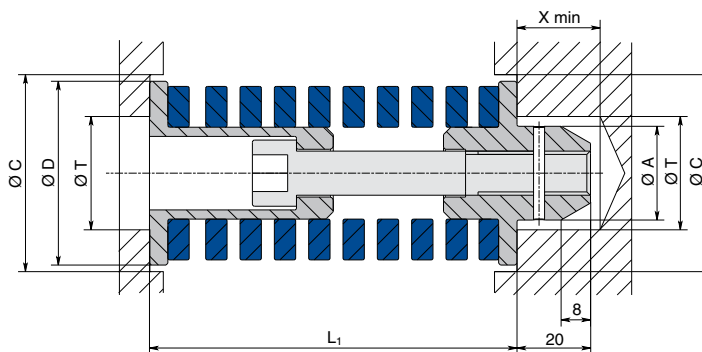
Peugeot - Citroën Standard

- IT** Sistema precompresso, carico medio, doppia spina
- EN** Precompressed unit, medium load, double pin
- DE** Vorspannungssystem, mittlere Spannung, Doppelstecker
- FR** Ensemble precomprime, charge moyenne, deux tetons
- ES** Sistema pretensado, carga mediana, doble clavija
- PT** Sistema pré-comprimido, carga média, dupla tomada



Code Special Springs	Code PSA Mabec	L1	ØA	ØB	ØD	Spring	Initial Force	25% L ₀	32% L ₀	ØC	ØT	X min	Spring data				
													D _H	L ₀	R		
15 02 B40069	X 346 590 070	69	20.5	22	40	17	1836	3	2160	42	22.5	25	40	76	108		
15 02 B40076	X 346 590 071	76				10	1080	10	2160					15	2700	76	108
15 02 B40100	X 346 590 072	100				12	972	13	2025					20	2592	102	81
15 02 B40122	X 346 590 073	122				15	941	17	2006					25	2508	127	62.7
15 02 B40143	X 346 590 074	143				19	981	19	1961					30	2528	152	51.6
15 02 B40188	X 346 590 075	188				25	918	25	1835					40	2373	203	36.7
15 02 B50088	X 346 590 076	88	25.5	27	50	24	2856	-	-	52	27.5	25	50	102	119		
15 02 B50100	X 346 590 077	100				12	1428	13	2975					20	3808	102	119
15 02 B50122	X 346 590 078	122				15	1455	17	3104					25	3880	127	97
15 02 B50143	X 346 590 079	143				19	1520	19	3040					30	3920	152	80
15 02 B50188	X 346 590 080	188				25	1495	25	2990					40	3887	203	59.8
15 02 B50232	X 346 590 081	232				32	1405	31	2766					50	3600	254	43.9
15 02 B63105	X 346 590 082	105	36.5	38	63	32	5376	-	-	65	38.5	25	63	127	168		
15 02 B63122	X 346 590 083	122				15	2520	17	5376					25	6720	127	168
15 02 B63143	X 346 590 084	143				19	2584	19	5168					30	6664	152	136
15 02 B63188	X 346 590 085	188				25	2500	25	5000					40	6500	203	100
15 02 B63232	X 346 590 086	232				32	2509	31	4939					50	6429	254	78.4
15 02 B63277	X 346 590 087	277				38	2459	38	4917					60	6341	305	64.7

- IT** Sistema precompresso, carico medio, spina singola
- EN** Precompressed unit, medium load, single pin
- DE** Vorspannungssystem, mittlere Spannung, Einfachstecker
- FR** Ensemble precomprime, charge moyenne, un teton
- ES** Sistema pretensado, carga mediana, clavija individual
- PT** Sistema pré-comprimido, carga média, tomada simples



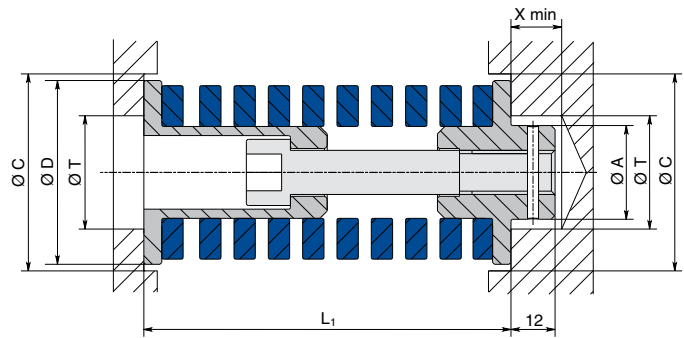
Code Special Springs	Code PSA Mabec	L1	ØA	ØB	ØD	Spring	Initial Force	25% L ₀	32% L ₀	ØC	ØT	X min	Spring data				
													D _H	L ₀	R		
15 01 B40069	X 346 590 063	69	20.5	-	40	17	1836	3	2160	42	22.5	25	40	76	108		
15 01 B40076	X 346 590 062	76				10	1080	10	2160					15	2700	76	108
15 01 B40100	X 346 590 061	100				12	972	13	2025					20	2592	102	81
15 01 B40143	X 346 590 059	143				19	980	19	1961					30	2528	152	51.6
15 01 B40188	X 346 590 058	188				25	918	25	1835					40	2386	203	36.7
15 01 B50088	X 346 590 057	88				24	2856	-	-					8	3808	102	119
15 01 B50100	X 346 590 056	100	12	1428	13	2975	20	3808	102	119							
15 01 B50143	X 346 590 054	143	19	1520	19	3040	30	3920	152	80							
15 01 B50188	X 346 590 053	188	25	1495	25	2990	40	3887	203	59.8							
15 01 B50232	X 346 590 052	232	32	1405	31	2766	50	3600	254	43.9							
15 01 B63105	X 346 590 051	105	36.5	-	63	32	5376	-	-	65	38.5	25	63	127	168		
15 01 B63143	X 346 590 049	143				19	2584	19	5168					30	6664	152	136
15 01 B63188	X 346 590 048	188				25	2500	25	5000					40	6500	203	100
15 01 B63232	X 346 590 047	232				32	2509	31	4939					50	6429	254	78.4
15 01 B63277	X 346 590 046	277				38	2459	38	4917					60	6341	305	64.7



Precompressed Unit

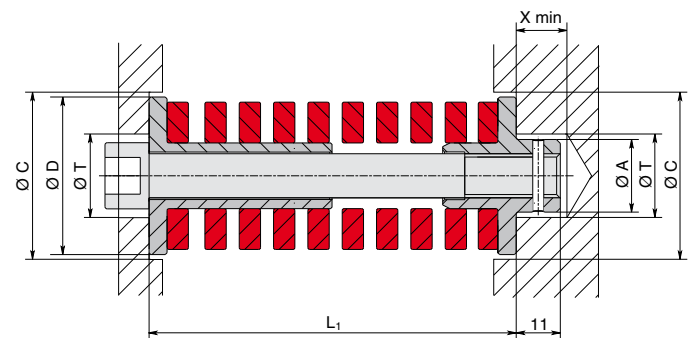
Peugeot - Citroën Standard

- IT** Sistema precompresso, carico medio, spina singola corta
- EN** Precompressed unit, medium load, short single pin
- DE** Vorspannungssystem, mittlere Spannung, kurzer Einfachstecker
- FR** Ensemble precomprime, charge moyenne, un teton court
- ES** Sistema pretensado, carga mediana, clavija individual corta
- PT** Sistema pré-comprimido, carga média, tomada simples curta



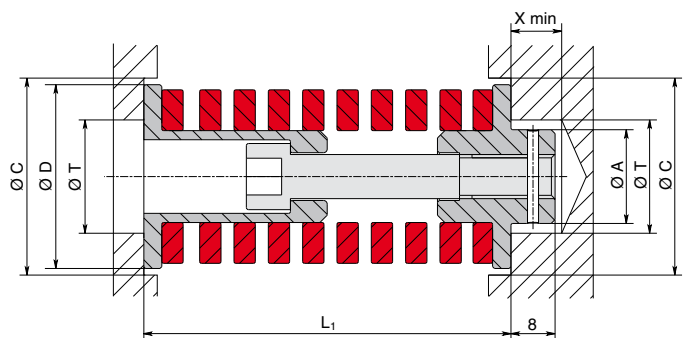
Code Special Springs	Code PSA Mabec	L1	ØA	ØB	ØD	Initial Force	25% Lo	32% Lo	ØC	ØT	X min	Spring data					
												D _H	L ₀	R			
15 01 B40122	X 346 590 060	122	20.5	-	40	15	940	17	2006	25	2508	42	22.5	13	40	127	62.7
15 01 B50122	X 346 590 055	122	25.5	-	50	15	1455	17	3104	25	3880	52	27.5	13	50	127	97
15 01 B63122	X 346 590 050	122	36.5	-	63	15	2520	17	5376	25	6720	65	38.5	13	63	127	168

- IT** Sistema precompresso, carico forte Ø25
- EN** Precompressed unit, strong load Ø25
- DE** Vorspannungssystem, starke Spannung Ø25
- FR** Ensemble precomprime, charge forte Ø25
- ES** Sistema pretensado, carga fuerte Ø25
- PT** Sistema pré-comprimido, carga pesada Ø25



Code Special Springs	Code PSA Mabec	L1	ØA	ØB	ØD	Initial Force	20% Lo	28% Lo	ØC	ØT	X min	Spring data					
												D _H	L ₀	R			
15 00 R25069	X 346 590 045	69	13	-	25	2	246	11	1599	16	2214	27	14	14	25	64	123

- IT** Sistema precompresso, carico forte Ø32
- EN** Precompressed unit, strong load Ø32
- DE** Vorspannungssystem, starke Spannung Ø32
- FR** Ensemble precomprime, charge forte Ø32
- ES** Sistema pretensado, carga fuerte Ø32
- PT** Sistema pré-comprimido, carga pesada Ø32



Code Special Springs	Code PSA Mabec	L1	ØA	ØB	ØD	Initial Force	20% Lo	28% Lo	ØC	ØT	X min	Spring data					
												D _H	L ₀	R			
15 00 R32088	X 346 590 044	88	13	-	33	21	2562	-	8	3528	34	14	8	32	102	122	
15 00 R32108	X 346 590 043	108	13	-	33	14	1498	9	2461	18	3424	34	14	8	32	115	107

1 N = 0.1 daN = 0.102 kgf



15 00 R25069